

Countdown Mastitis Focus

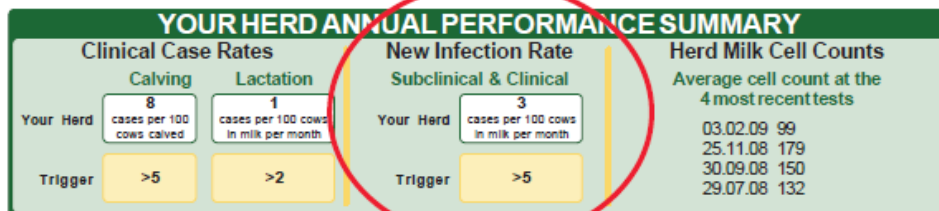
You're looking at a **Countdown Mastitis Focus** report generated for your herd.

Mastitis control has been made difficult this season due to the wet and humid conditions. We have generated this report to help you identify problem areas and potential risks. It also lets you track progress after any management changes are made.

Diagnosing problems and deciding the most appropriate action to take is best done in consultation with a skilled adviser. Please contact your local Veterinarian or visit www.countdown.org.au for a list of Countdown trained advisers in your area.

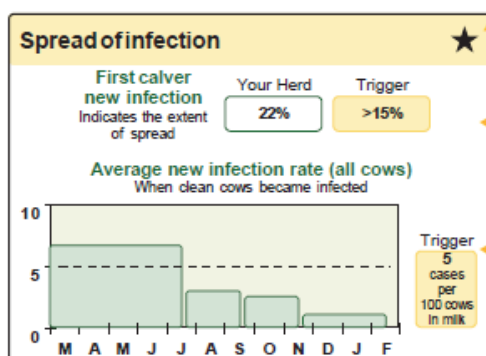
Countdown Mastitis Focus uses your cow records to give an accurate overview of udder health in your herd. Let's take a look at one of the measures in the report – the 'New Infection Rate', a measure that gives you even more value from your cell counts.

The New Infection Rate shows how quickly infection is spreading to clean cows. It can only be measured in herds that participate in milk recording as most new mastitis infections are subclinical (not clinical). Taking immediate action when the New Infection Rate is above the trigger level may help avert a clinical case outbreak.



The New Infection Rate in your herd for the past 12 months is shown at the top of your report.

The Spread of Infection box in your report has more detail about the new infection rate and shows when spread was active.



A low star rating provides an alert to emerging problems.

This clearly indicates the extent of spread as heifers are clean before they enter the milking herd.

Each bar on the graph represents the period between herd tests and shows the spread of infection during that time.

- More information about the report and ideas on actions you might take are given in the Countdown Mastitis Focus Fact Sheets available from www.countdown.org.au
- Entering clinical case and dry cow records into your herd management software will enable you to also assess udder health at calving, in lactation and at drying-off (the other areas on the report).

Example Herd



Report period: 01.04.10 - 02.03.11

Total calvings: 255

Herd test cell count: 338

Herd ID:

Printed: 02.03.2011

YOUR HERD ANNUAL PERFORMANCE SUMMARY

Clinical Case Rates

Calving

Lactation

Your Herd

11
cases per 100 cows calved

3
cases per 100 cows in milk per month

Trigger

>5

>2

New Infection Rate

Subclinical & Clinical

Your Herd

5
cases per 100 cows in milk per month

Trigger

>5

Herd Milk Cell Counts

Average cell count at the 4 most recent tests

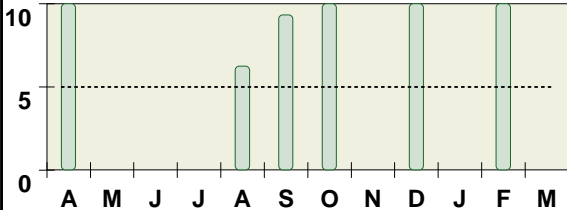
25.01.11 338
16.11.10 280
21.09.10 353
27.07.10 256

KEY MANAGEMENT AREAS IN FOCUS

Your calving system ★

Monthly clinical case rate at calving (all cows)

When cases occurred



Trigger
5
cases per 100 cows calved

First calver clinical case rate

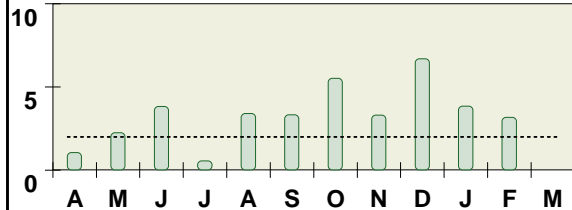
Your Herd
4
cases per 100 first calvers

Trigger
>5

Clinical mastitis ★

Monthly clinical case rate in lactation (all cows)

When cases occurred



Trigger
2
cases per 100 cows in milk

Total clinical cases

Your Herd
123 cases

Treatment failure

Cases with an extended treatment

Your Herd
0%

Trigger
>20%

Spread of infection ★

First calver new infection

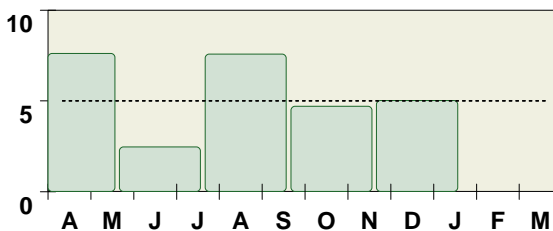
Indicates the extent of spread

Your Herd
17%

Trigger
>15%

Average new infection rate (all cows)

When clean cows became infected



Trigger
5
cases per 100 cows in milk

Previous dry-off strategies ★

Failure to cure over the dry

Existing infections not cured by antibiotic Dry Cow Treatment

Your Herd
38%

Trigger
>20%

Missed treatments

Infected cows that didn't receive antibiotic Dry Cow Treatment

Your Herd
3%

Trigger
>5%

Infections over the dry

Cows that became infected in the dry-off or at calving

Your Herd
33%

Trigger
>10%

Dry period clinical case rate

Indicates the success of the dry-off procedure

Your Herd
0

Trigger
>1
case per 100 cows

Culling to control mastitis ★

Cows prone to clinical mastitis

Cows in herd with 3 or more clinical cases in a lactation

Your Herd
12 cows

Trigger
Any Cows

Cows infected in multiple lactations

Cows still infected after 2 consecutive prior lactations despite intervening DCT

Your Herd
41 cows

Trigger
Any Cows

Plan your next drying-off

Only consider a selective DCT strategy when:

You have 4 or more cell counts for each cow

Your Herd
Yes

Strep ag is not present in your herd (based on milk culture results)

See your vet

Less than 30% of cows had high cell counts

Yes

Your clinical case rate at calving was less than 5

No

Star rating



Consistently below trigger points



Opportunity to reduce risk



Seek professional advice



Insufficient records

Behind your Mastitis Focus Report

Herd ID:

Report period 01.04.10 to 02.03.11

FARM DATA BOX -- Check that these records represent your herd

Number of	Apr	May	Jun	Jul	Aug	Sep	Oct	Nov	Dec	Jan	Feb	Mar	TOTAL
Cows milking	315	316	309	216	287	333	339	318	318	249	282	263	
Cows herd tested		302		176		306		305		216			
Calvings	24	2	1	16	90	47	12	4	1		58		255
Heifer calvings	3			5	26	10	1	2			2		49
Cows culled or died	1	8	2	4	2	5	26	1		2	3		54
Clinical cases	8	7	9	1	12	14	20	10	20	9	13		123
Cows dried-off		3	108	18	1	2			69	25	17		243
Antibiotic DCT			106	18					69	23	17		233
Cows given Teat Sealant													

NUTS AND BOLTS -- Helps cross-check the details behind the key management areas

Your calving system

Calving dates:
 Clinical case records:
 Termination dates:
 Birth dates:

Monthly clinical case rate at calving

Number of clinical cases within 14 days of calving: 26

When they occurred:

Apr May Jun Jul Aug Sep Oct Nov Dec Jan Feb Mar
 5 5 3 1 7

First calver clinical case rate

First calvers that calved during the report period 49

Clinical cases in first calvers within 14 days of calving 2

Clinical mastitis management

Calving dates:
 Clinical case records:
 Termination dates:
 LCT records:

Monthly clinical case rate in lactation

Number of clinical cases in lactation (from 14 days after calving): 97

When they occurred:

Apr May Jun Jul Aug Sep Oct Nov Dec Jan Feb Mar
 3 7 9 1 7 9 17 10 19 9 6

Total clinical cases 123

Treatment failure

Number of cases given an extended treatment course (4 or more doses of antibiotic in 10 days): 0

Spread of infection

Calving dates:
 Clinical case records:
 Herd test records:
 Termination dates:
 Birth dates:

First calver new infection

The number of first calvers that developed a high cell count or clinical case during the report period: 17

Average new infection rate

Average infection rate between herd tests:

11.05.2010 - 7.6
 27.07.2010 - 2.5
 21.09.2010 - 7.6
 16.11.2010 - 4.7
 25.01.2011 - 5.0

Previous dry-off strategies

Calving dates:
 Clinical case records:
 Herd test records:
 DCT records:
 Termination dates:

Eligible COWS (dried-off and re-calved during the report period) 180

Failure to cure over the dry

Eligible cows that were infected and treated with antibiotic dry cow: 177
 Of these, the number herd tested after calving (10-30 days): 16
 And still had a high cell count or clinical case after calving: 6

Missed treatments

Eligible cows infected and not given antibiotic DCT: 3

Infections over the dry

Eligible cows uninfected in previous lactation: 101
 Of those, the number herd tested after calving (10-30 days): 12
 And developed a high CC or clinical case after calving: 4

Dry period clinical case rate

Number of cows that had a clinical case over the dry period: 0

Culling to control mastitis

Clinical case records:
 Herd test records:
 DCT records:
 Termination dates:

Cows prone to clinical mastitis

Number of cows in herd with 3 or more clinical cases in a lactation: 12

Cows infected in multiple lactations

Number of cows still infected after 2 consecutive prior lactations despite intervening DCT 41

Plan your next drying-off

Number of cows milking at report end date: 259

Number of cows more than 240 days into lactation: 41

Of these, the number with 4 or more cell counts (YES reported when more than 80%) 38

And number with a peak cell count above 250,000: 11

For more information visit www.countdown.org.au.

This report is a guide only and professional advice should be sought about your specific circumstances.